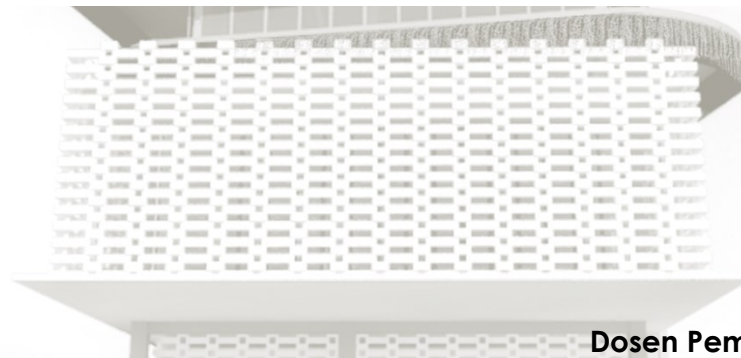
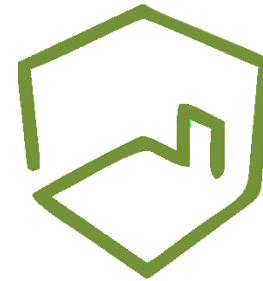
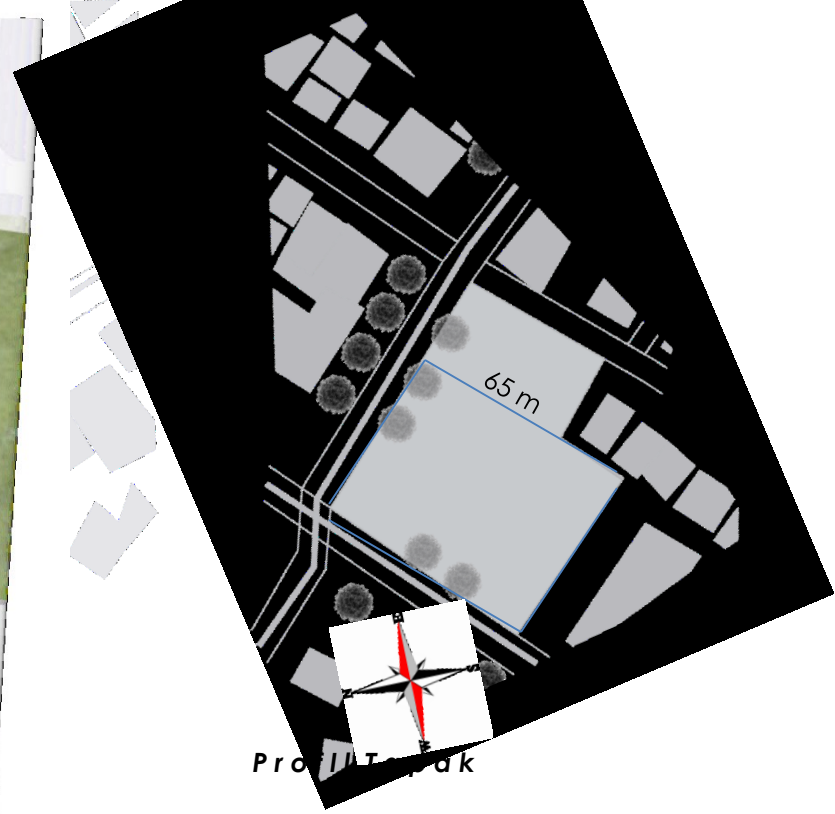
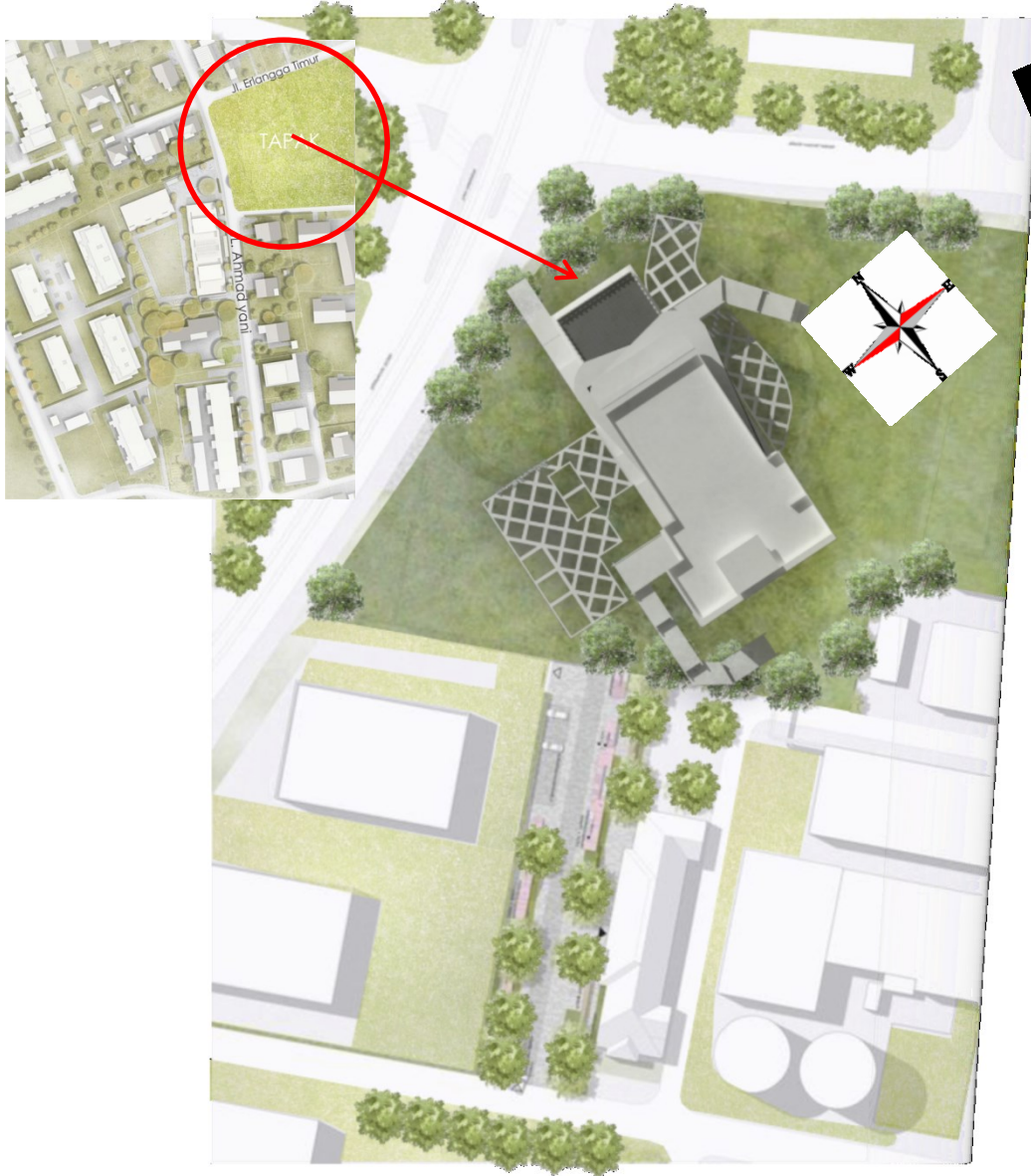




Semarang  
creativehub



Kartika Putri Bhayangkari  
**Dosen Pembimbing** : Dr. Ir. Erni Setyowati, MTA



### Profil Tapak

**Lokasi :**

Jl. Ahmad Yani, Semarang

**Luas Site :**

2925 m<sup>2</sup>

**Peraturan Pembangunan :**

**KDB** 60% 1755 m<sup>2</sup>

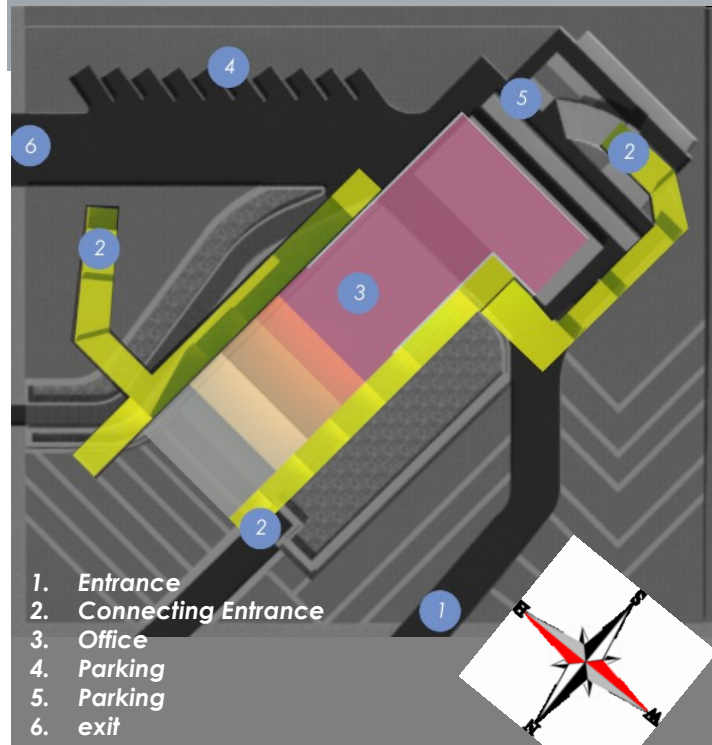
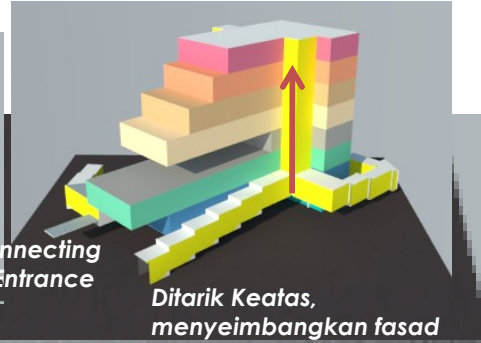
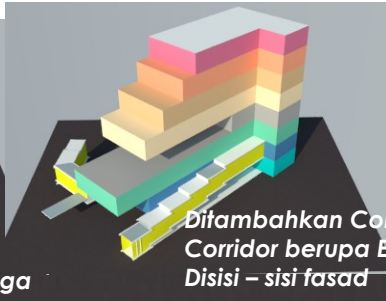
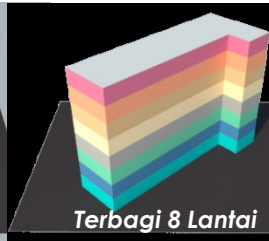
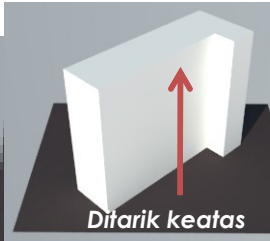
**KLB** 12 Lantai

**GSB** 10-29 m

**RTH** 40% 1170 m<sup>2</sup>

**Area Parkir** 30% rth 351 m<sup>2</sup>

# Transformasi Bentuk



## Data Bangunan :

Luas Tapak : 2925 m<sup>2</sup>

Building Coverage : 1755 m<sup>2</sup>

Lahan Parkir : 351 m<sup>2</sup>

RTH : 1170 m<sup>2</sup>

GSB : 12 m

GS Samping : 2m

Building Depth : (12 m+21 m) :2 = 16.5m

## Zona Bangunan :

Kegiatan Utama 8

Privasi 7

Kegiatan Utama 6

Publik 5

Kegiatan Utama 4

Kegiatan Utama 3

Penunjang 2

1

## Program Ruang :

R. Pengelola 25 m<sup>2</sup>

R. Informasi 5 m<sup>2</sup>

Design Store 180 m<sup>2</sup>

Toilet 33 m<sup>2</sup>

Co-Working 320 m<sup>2</sup>

Perpustakaan 40 m<sup>2</sup>

Musholla 15 m<sup>2</sup>

Café 328 m<sup>2</sup>

MarkerspaceA 276 m<sup>2</sup>

MarkerspaceB 216 m<sup>2</sup>

Penyimpanan 15 m<sup>2</sup>

Classroom 15 m<sup>2</sup>

Exhibition 216 m<sup>2</sup>

Conference A 15 m<sup>2</sup>

Conference B 180 m<sup>2</sup>

1600 m<sup>2</sup>

## Orientasi Bangunan :

Utara 3.47 % ✓

Selatan 3.47 % ✓

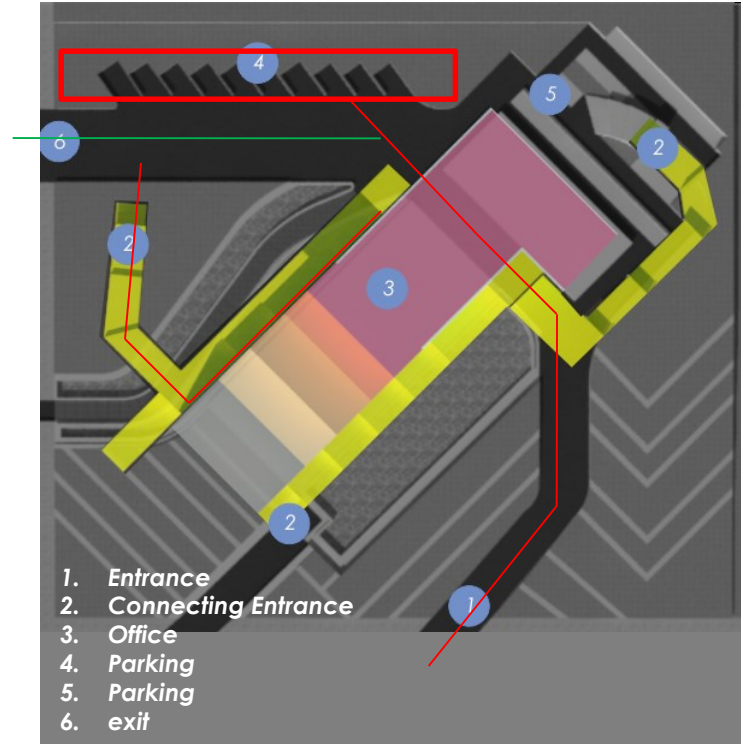
Timur 1.19 %

Barat 1.19 %

# Sirkulasi



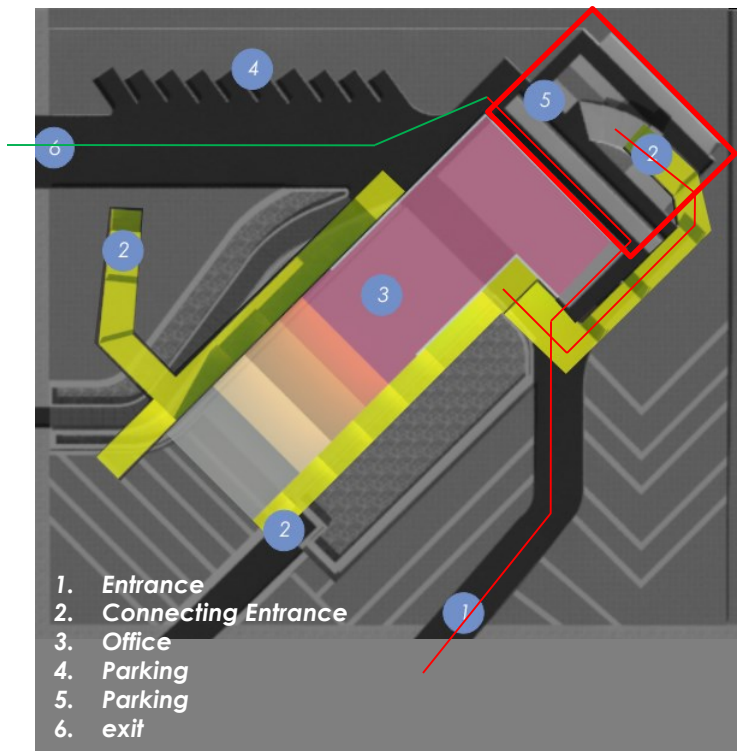
Pengendara Mobil



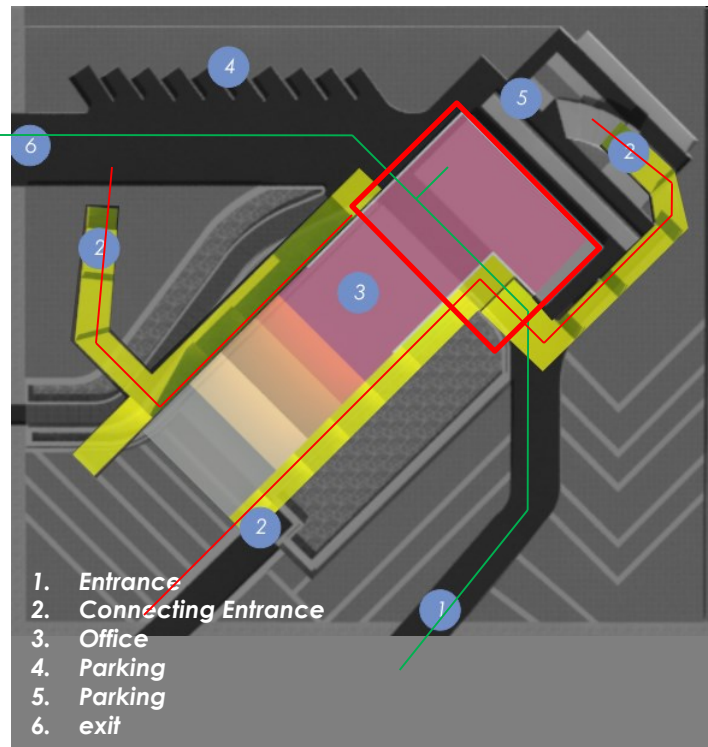
Pengendara Mobil



# Sirkulasi

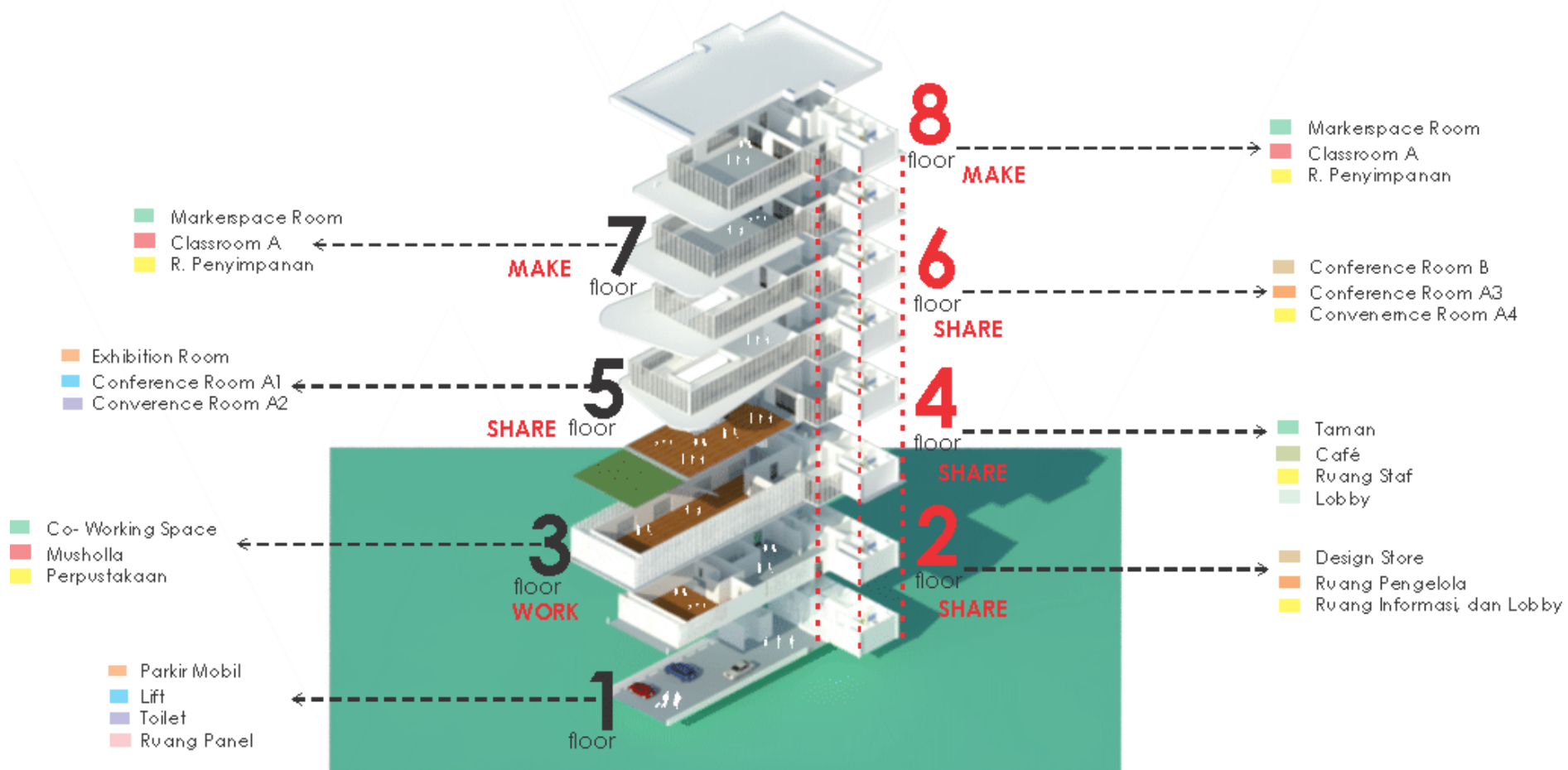


**Pengendara Motor**



**Pejalan kaki**

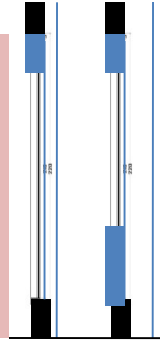
## Zonasi Bangunan



## Energy Saving

### OFE . 01 – Reduced Window to Wall Ratio - WWR 20,39%

	Wall Area	Glazing	Ratio %
North	883.0	491.0	55.61%
South	549.0	249.0	45.36%
East	495.0	307.0	62.02%
West	735.0	133.0	18.10%
	2662.0	1180.0	44.33%

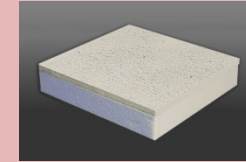


### OFE . 05 Insulation of Roof 9,86%

Menggunakan Insulation Board- Expand Polystyrene EPS High density (32)

Tebal 200 mm  
Konduksinya 0,033  
Resisten 6.061

Roof U-Value 0,16



### OFE . 04 External Shading Device. AASF 30.25%

	Overhang	Area Kaca	AASF
North	H/2	108.0	0.44
South	H/2	107.5	0.50
East	H/1	191.0	0.98
West	H/1	1.0	0.52
		408.0	0.47

### OFE . 07 – Low E Coated Glass 9.04%

	External Glass	SHGC	U-Value
Type 1	406.0	0.69	5.30
Type 2	801.5	0.76	5.14
	1207.05	0.74	5.19

TYPE 1 : Kaca Panasap Euro Grey 8 mm

TYPE 2 : Kaca Clear Float 8 mm



## OFE . 011 – Variable Refrigerant Flow System

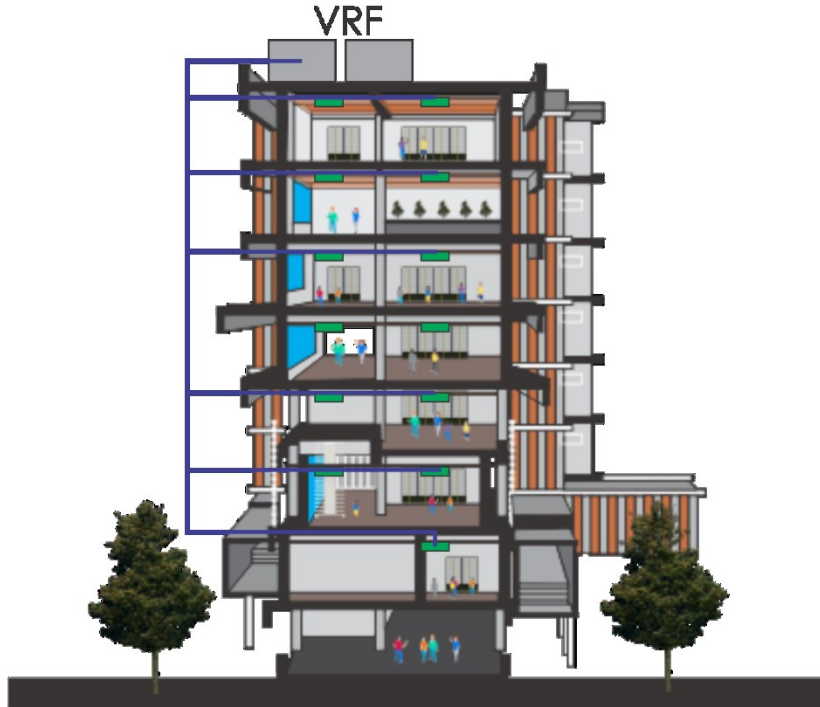
26.87%

Menggunakan Sistem AC VRF . Dengan **COP 4.45**

Alasan :

1. Dapat memperoleh bentuk Undit Indoor yang berbeda- beda
2. Unit Outdoor yang Saving Space
3. Dapat Mengatur Pendinginan Berlebih

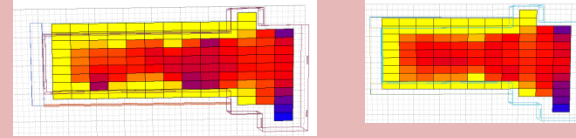
Menggunakan Coeficient Performance 100 % = COP 4.45



## OFE . 09 – Daylight Photoelectric Sensors

13.52%

Ruang Yang Mendapatkan Cahaya Alami terdapat pada ruang Creative dan Markerspace





## Water Efficiency Measures

Choose water efficiency measures to achieve savings of at least 20%.

DFW01\*  Low-Flow Faucets in All Bathrooms - 7 L/min

L/min

[Upload Document\(s\)](#) | [Calculator](#)

DFW02\*  Dual Flush for Water Closets in All Bathrooms - 3.3 L/first flush and 3.3 L/second flush

Single Flush/Flush Valve

1st - L/flush

2nd - L/flush

[Upload Document\(s\)](#)

DFW03\*  Water-Efficient Urinals in All Other Bathrooms - 3.3 L/flush

L/flush

[Upload Document\(s\)](#)

DFW04\*  Water-Efficient Faucets for Kitchen Sinks - 5 L/min

L/min

[Upload Document\(s\)](#) | [Calculator](#)

DFW05  Condensate Water Recovery

DFW06  Rainwater Harvesting System - 100% of Roof Area Used for Collection

% of Roof Area Used

[Upload Document\(s\)](#)

DFW07  Grey Water Treatment and Recycling System

[Upload Document\(s\)](#)

DFW08  Black Water Treatment and Recycling System

[Upload Document\(s\)](#)

\*Indicates a measure that must be ticked and a value entered, whether or not it contributes positively to savings.

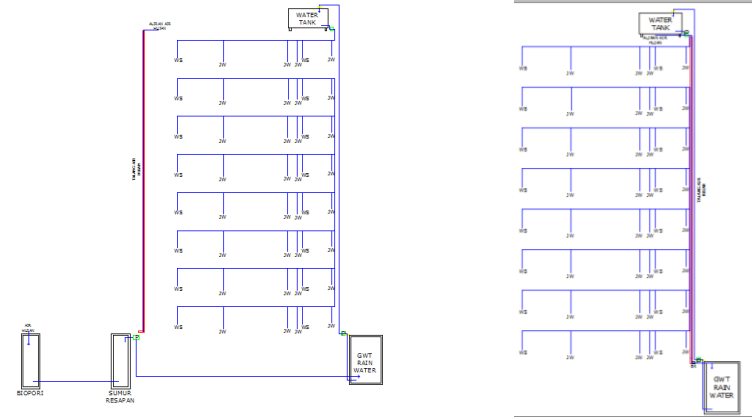
<b>Net Lettable Area</b>	<b>1600 m<sup>2</sup></b>
<b>Asumsi Pegawai</b>	<b>100 Orang/hari</b>
<b>Jam Operasional</b>	<b>10 Jam</b>

### Rain Water harvesting

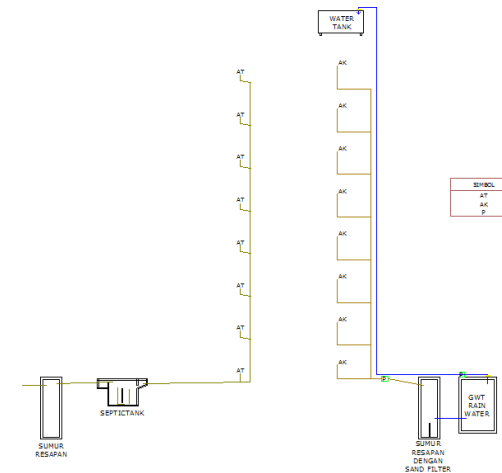
<b>Kapasitas Tanki Yang direncanakan</b>	<b>10000 L</b>
<b>Curah Hujan</b>	<b>15.61 mm</b>
<b>Koefisien Limpasan</b>	<b>0.95</b>
<b>Luas Atap</b>	<b>463.5</b>
<b>Volume Penampung Ideal</b>	<b>6871.8 L</b>
<b>Persentase Kemampuan Penampung</b>	<b>146%</b>

## Water Saving

### SISTEM RAIN WATER HARVESTING



### SISTEM GREY WATER DAN BLACK WATER



# MATERIALS SAVING

## 51,02 %

### OFM . 01

**FLOOR SLAB**  
 Pada Fasad menggunakan Jenis Konstruksi Floor Slab; **In-Situ Reinforced Concrete Slab dengan Ketebalan 100 mm**  
 Diperoleh Material Saving : **10.5 %**

### OFM . 05

**FLOORING**  
 Pada Fasad Berikut menggunakan jenis Flooring : **Finished Concrete Floor (Lantai Plester Lapis Panji)**  
 Diperoleh Material Saving : **27.50 %**

### OFM . 02

**ROOF CONSTRUCTION**  
 Menggunakan Jenis Konstruksi Atap : **In-Situ Concrete Slab dengan Ketebalan 100 mm**  
 Diperoleh Material Saving : **10.5 %**

### OFM . 06

**WINDOW FRAMES**  
 Window Frames yang digunakan jenis **UPVC**, karena lebih ringan dan hemat.  
 Diperoleh Material Saving : **6.25 %**

### OFM . 03

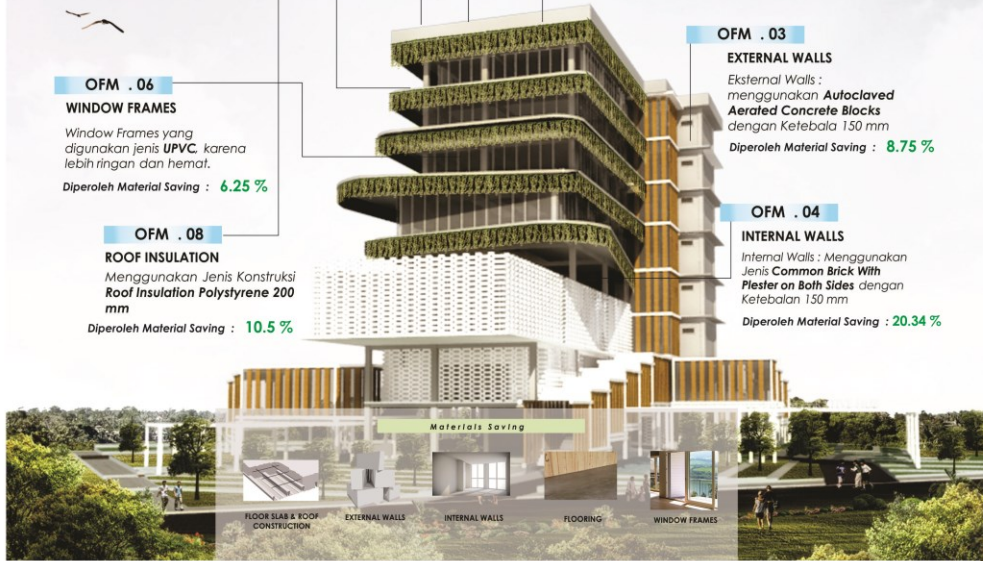
**EXTERNAL WALLS**  
 Eksternal Walls : menggunakan **Autoclaved Aerated Concrete Blocks** dengan Ketebalan 150 mm  
 Diperoleh Material Saving : **8.75 %**

### OFM . 08

**ROOF INSULATION**  
 Menggunakan Jenis Konstruksi **Roof Insulation Polystyrene 200 mm**  
 Diperoleh Material Saving : **10.5 %**

### OFM . 04

**INTERNAL WALLS**  
 Internal Walls : Menggunakan Jenis **Common Brick With Plester on Both Sides** dengan Ketebalan 150 mm  
 Diperoleh Material Saving : **20.34 %**



Lobby Area



**To-Ko Conceptor**  
 Tempat pengunjung dapat mencari hasil karya Industri kreatif, dan tempat kreator menciptakan Karyanya



**Classroom**  
 Berisi 20 Orang, dengan 2 orang pengajar.



**Co-Working Area**  
 Tempat Pengunjung dapat melakukan pekerjaan



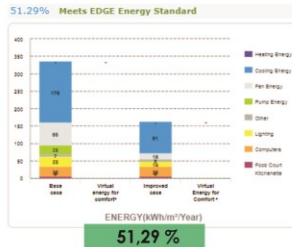
**Conference Room B**  
 Menampung 100 Orang, lebih besar dari ruang Conference A



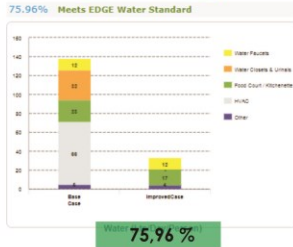
POTONGAN B-B

RESULT

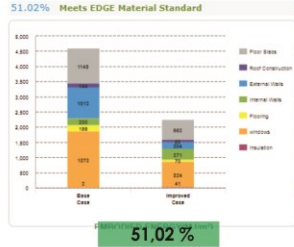
### ENERGY SAVING

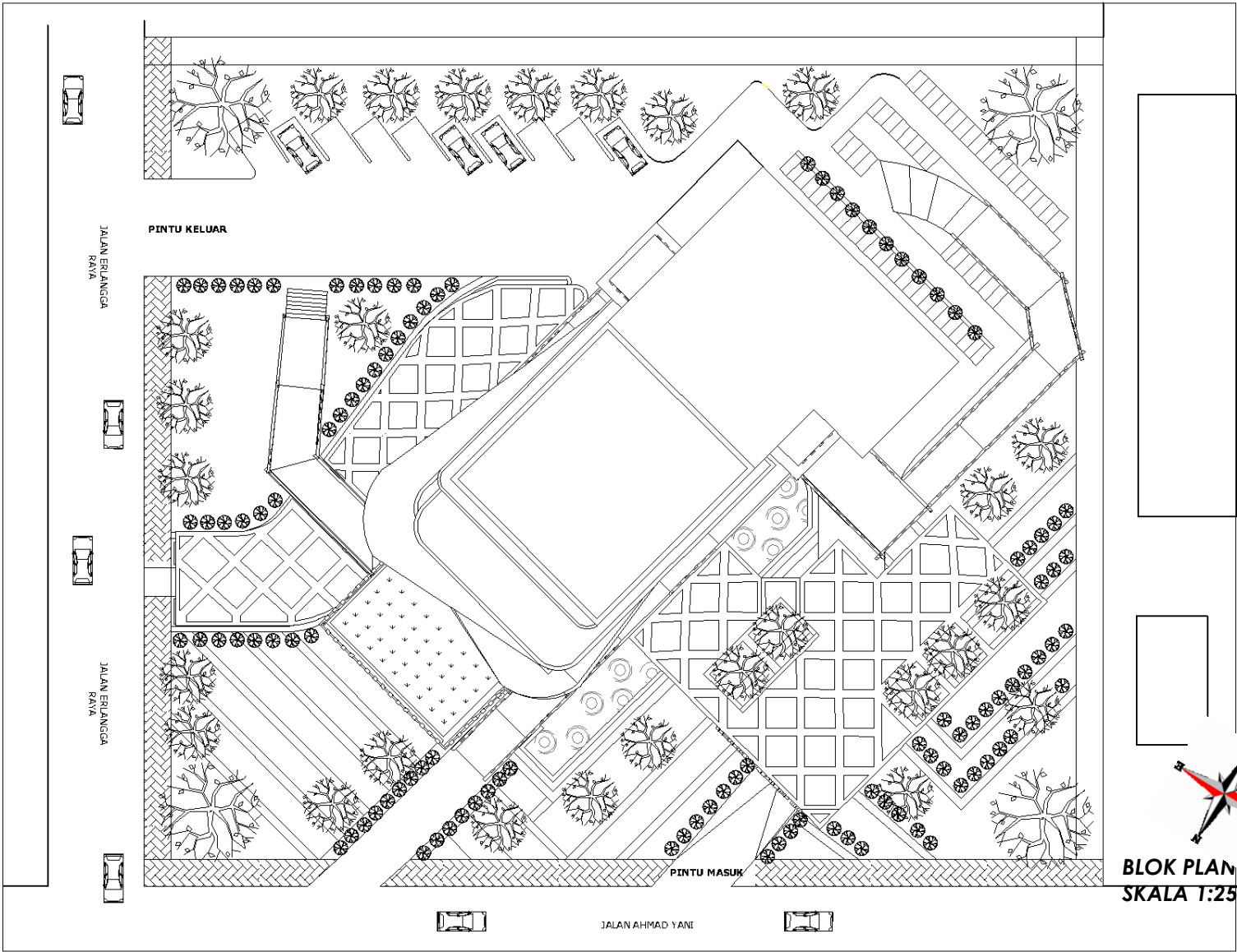


### WATER SAVING



### MATERIALS SAVING





JALAN ERLANGGA RAYA

JALAN ERLANGGA RAYA

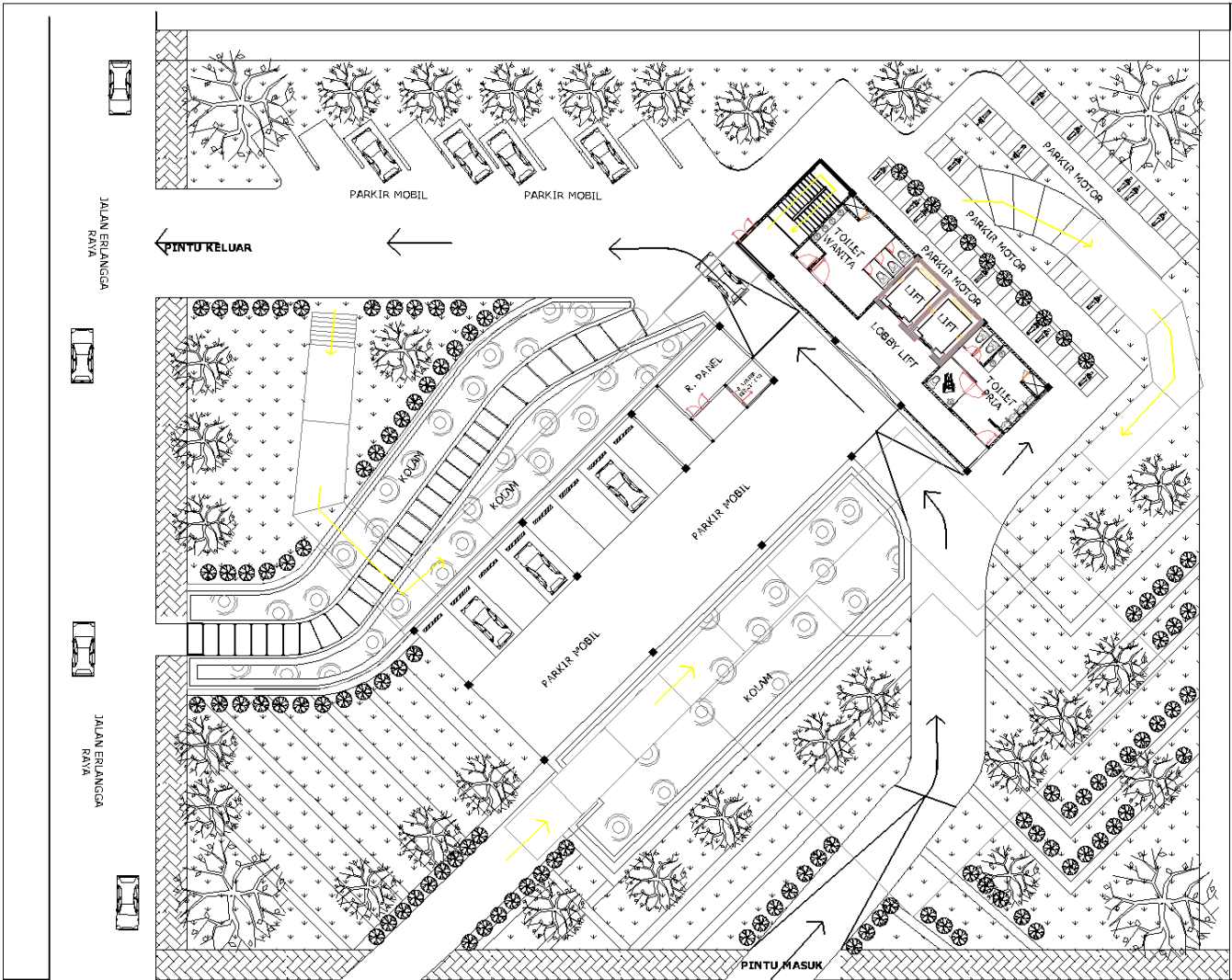
PINTU KELUAR

PINTU MASUK

JALAN AHMAD YANI



**BLOK PLAN CREATIVE HUB**  
**SKALA 1:250**



**SITE PLAN CREATIVE HUB**  
**SKALA 1:250**

JALAN ERANGGA RAYA

JALAN ERANGGA RAYA

JALAN AHMAD YANI

JALAN AHMAD YANI

PINTU KELUAR

PINTU MASUK

PARKIR MOBIL

PARKIR MOBIL

PARKIR MOTOR

PARKIR MOTOR

PARKIR MOTOR

PARKIR MOTOR

PARKIR MOTOR

PARKIR MOTOR

PARKIR MOTOR

PARKIR MOTOR

PARKIR MOTOR

PARKIR MOTOR

PARKIR MOTOR

PARKIR MOTOR

PARKIR MOTOR

PARKIR MOTOR

PARKIR MOTOR

PARKIR MOTOR

KOLAM

KOLAM

KOLAM

KOLAM

KOLAM

KOLAM

KOLAM

KOLAM

KOLAM

KOLAM

KOLAM

KOLAM

KOLAM

R. DAVEL

R. DAVEL

R. DAVEL

R. DAVEL

R. DAVEL

R. DAVEL

R. DAVEL

R. DAVEL

R. DAVEL

R. DAVEL

R. DAVEL

R. DAVEL

R. DAVEL

TOILET

TOILET

TOILET

TOILET

TOILET

TOILET

TOILET

TOILET

TOILET

TOILET

TOILET

TOILET

TOILET

LOBBY LIFT

LOBBY LIFT

LOBBY LIFT

LOBBY LIFT

LOBBY LIFT

LOBBY LIFT

LOBBY LIFT

LOBBY LIFT

LOBBY LIFT

LOBBY LIFT

LOBBY LIFT

LOBBY LIFT

LOBBY LIFT

LIFT

LIFT

LIFT

LIFT

LIFT

LIFT

LIFT

LIFT

LIFT

LIFT

LIFT

LIFT

LIFT

TOILET

TOILET

TOILET

TOILET

TOILET

TOILET

TOILET

TOILET

TOILET

TOILET

TOILET

TOILET

TOILET

TOILET

TOILET

TOILET

TOILET

TOILET

TOILET

TOILET

TOILET

TOILET

TOILET

TOILET

TOILET

TOILET

TOILET

TOILET

TOILET

TOILET

TOILET

TOILET

TOILET

TOILET

TOILET

TOILET

TOILET

TOILET

TOILET

TOILET

TOILET

TOILET

TOILET

TOILET

TOILET

TOILET

TOILET

TOILET

TOILET

TOILET

TOILET

TOILET

TOILET

TOILET

TOILET

TOILET

TOILET

TOILET

TOILET

TOILET

TOILET

TOILET

TOILET

TOILET

TOILET

TOILET

TOILET

TOILET

TOILET

TOILET

TOILET

TOILET

TOILET

TOILET

TOILET

TOILET

TOILET

TOILET

TOILET

TOILET

TOILET

TOILET

TOILET

TOILET

TOILET

TOILET

TOILET

TOILET

TOILET

TOILET

TOILET

TOILET

TOILET

TOILET

TOILET

TOILET

TOILET

TOILET

TOILET

TOILET

TOILET

TOILET

TOILET

TOILET

TOILET

TOILET

TOILET

TOILET

TOILET

TOILET

TOILET

TOILET

TOILET

TOILET

TOILET

TOILET

TOILET

TOILET

TOILET

TOILET

TOILET

TOILET

TOILET

TOILET

TOILET

TOILET

TOILET

TOILET

TOILET

TOILET

TOILET

TOILET

TOILET

TOILET

TOILET

TOILET

TOILET

TOILET

TOILET

TOILET

TOILET

TOILET

TOILET

TOILET

TOILET

TOILET

TOILET

TOILET

TOILET

TOILET

TOILET

TOILET

TOILET

TOILET

TOILET

TOILET

TOILET

TOILET

TOILET

TOILET

TOILET

TOILET

TOILET

TOILET

TOILET

TOILET

TOILET

TOILET

TOILET

TOILET

TOILET

TOILET

TOILET

TOILET

TOILET

TOILET

TOILET

TOILET

TOILET

TOILET

TOILET

TOILET

TOILET

TOILET

TOILET

TOILET

TOILET

TOILET

TOILET

TOILET

TOILET

TOILET

TOILET

TOILET

TOILET

TOILET

TOILET

TOILET

TOILET

TOILET

TOILET

TOILET

TOILET

TOILET

TOILET

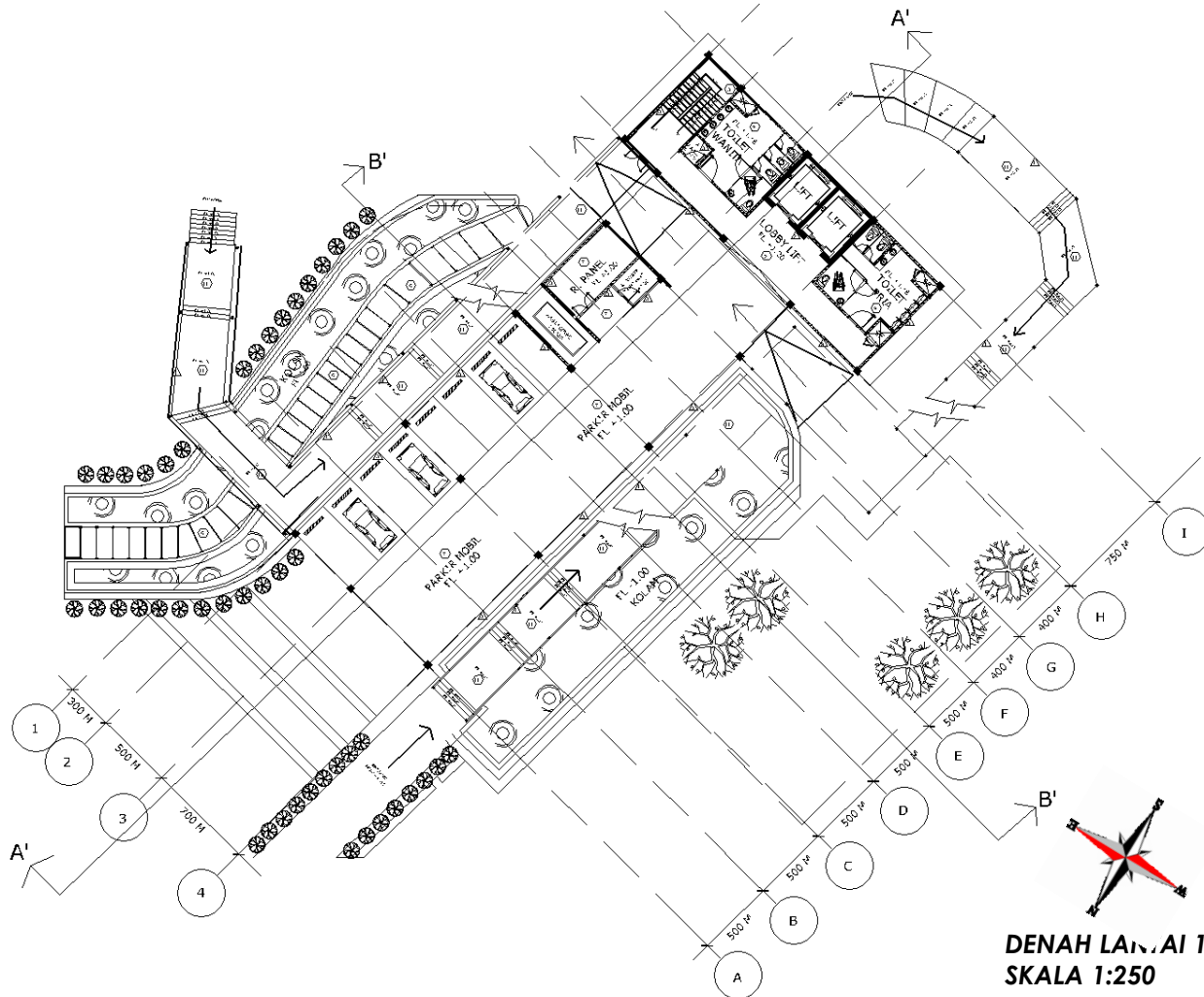
TOILET

TOILET

TOILET

TOILET

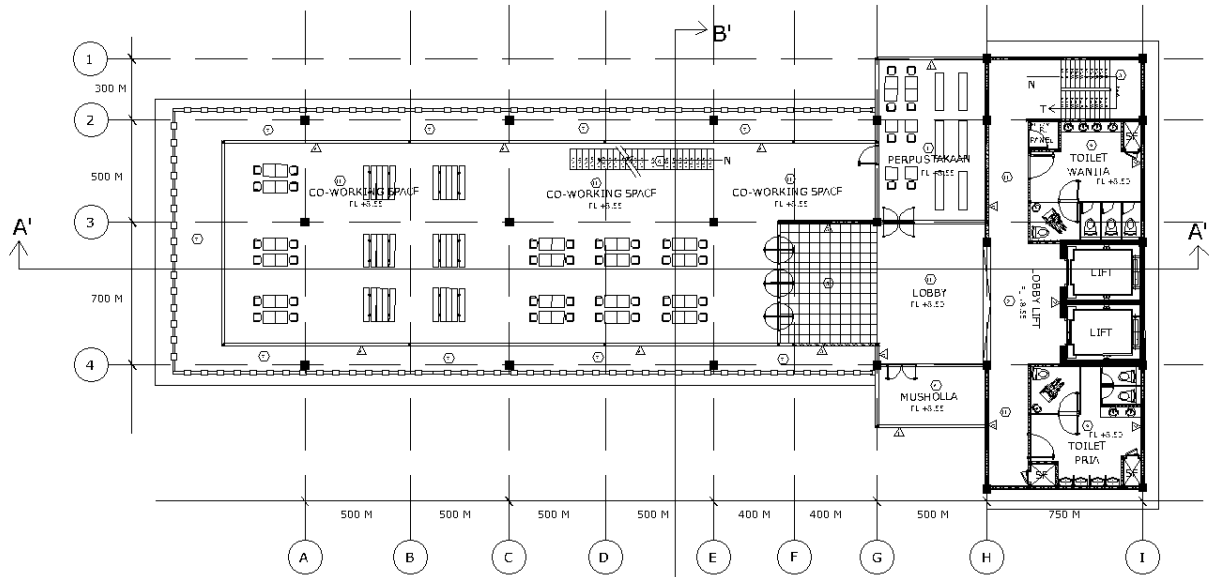




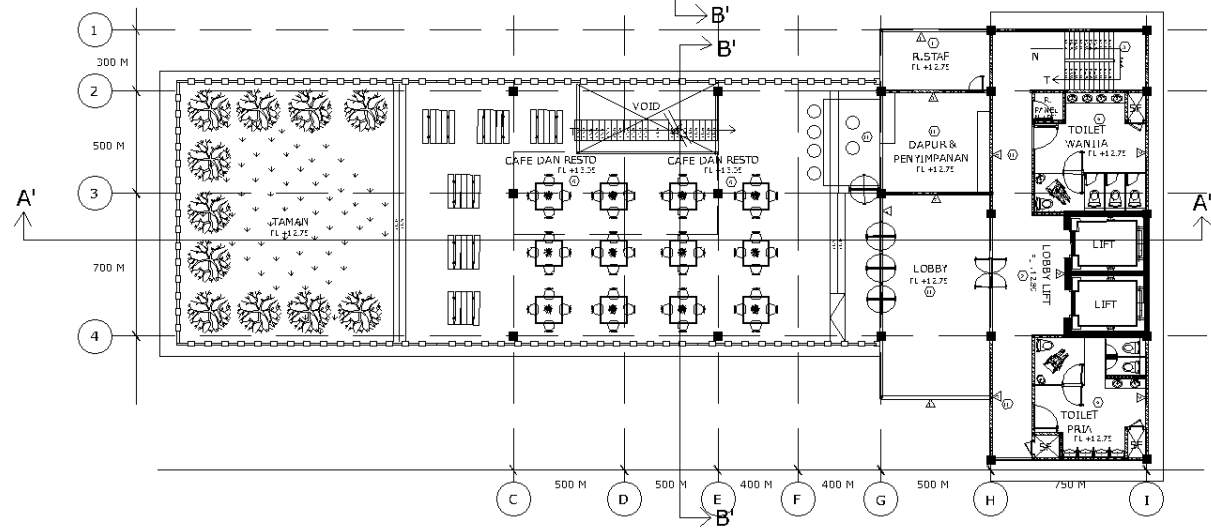
**DENAH LANTAI 1**  
**SKALA 1:250**



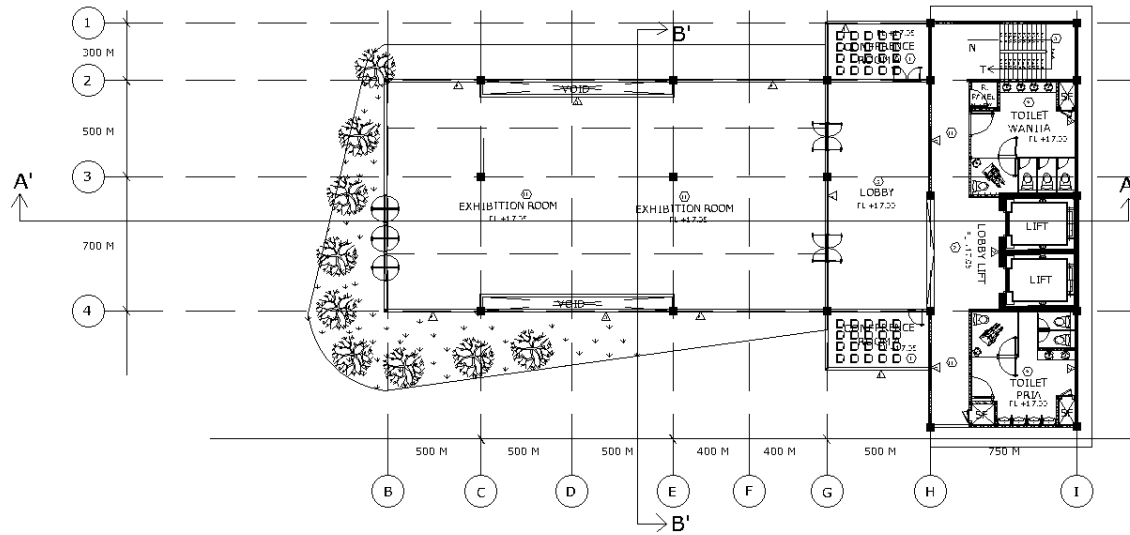




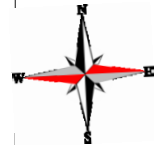
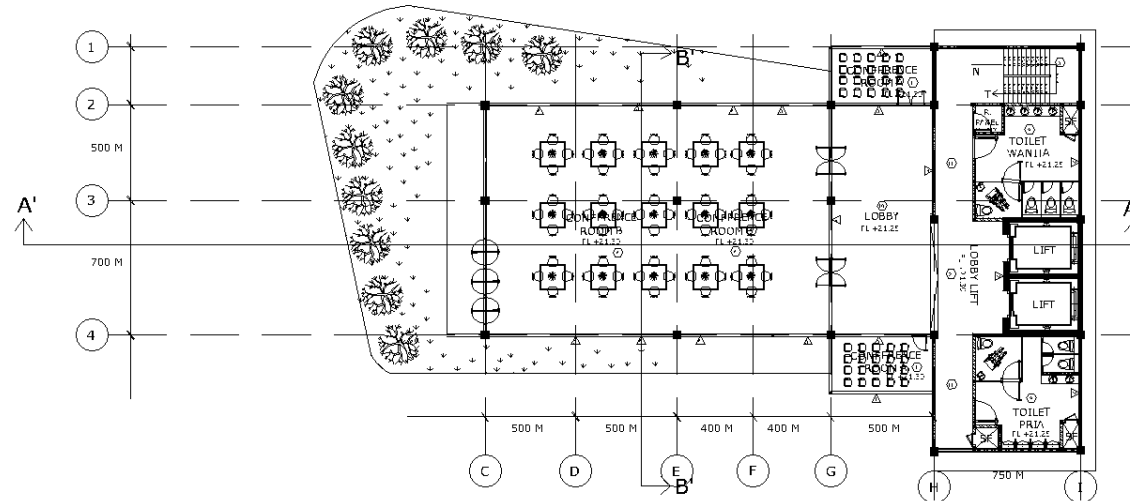
**DENAH LANTAI 3**  
SKALA 1:250



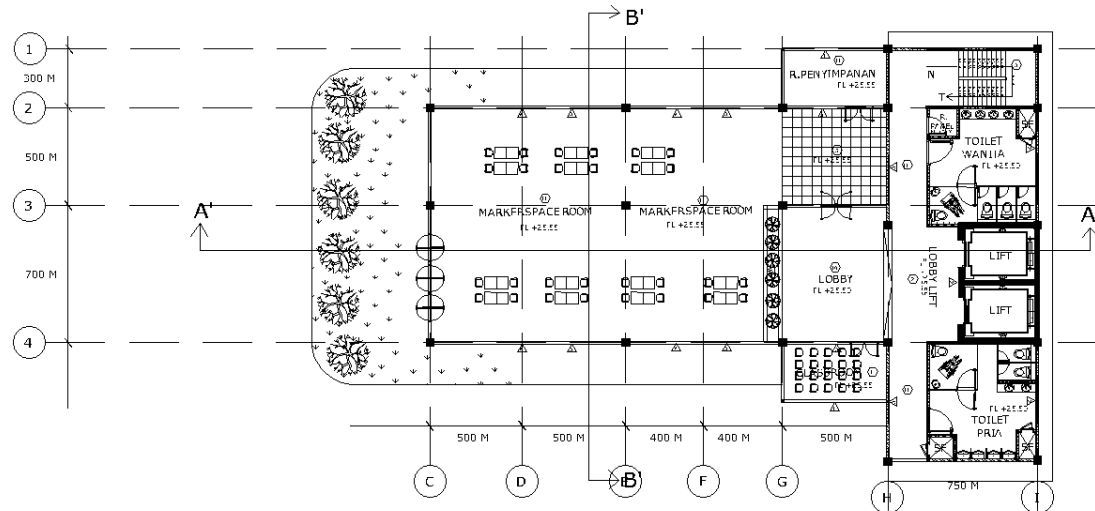
**DENAH LANTAI 4**  
SKALA 1:250



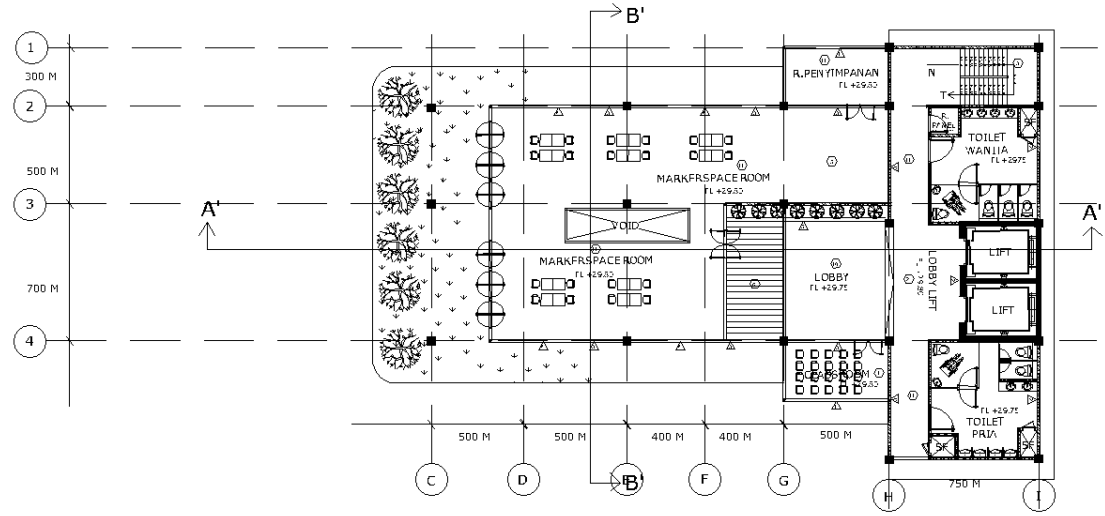
**DENAH LANTAI 5**  
**SKALA 1:250**



**DENAH LANTAI 6**  
**SKALA 1:250**



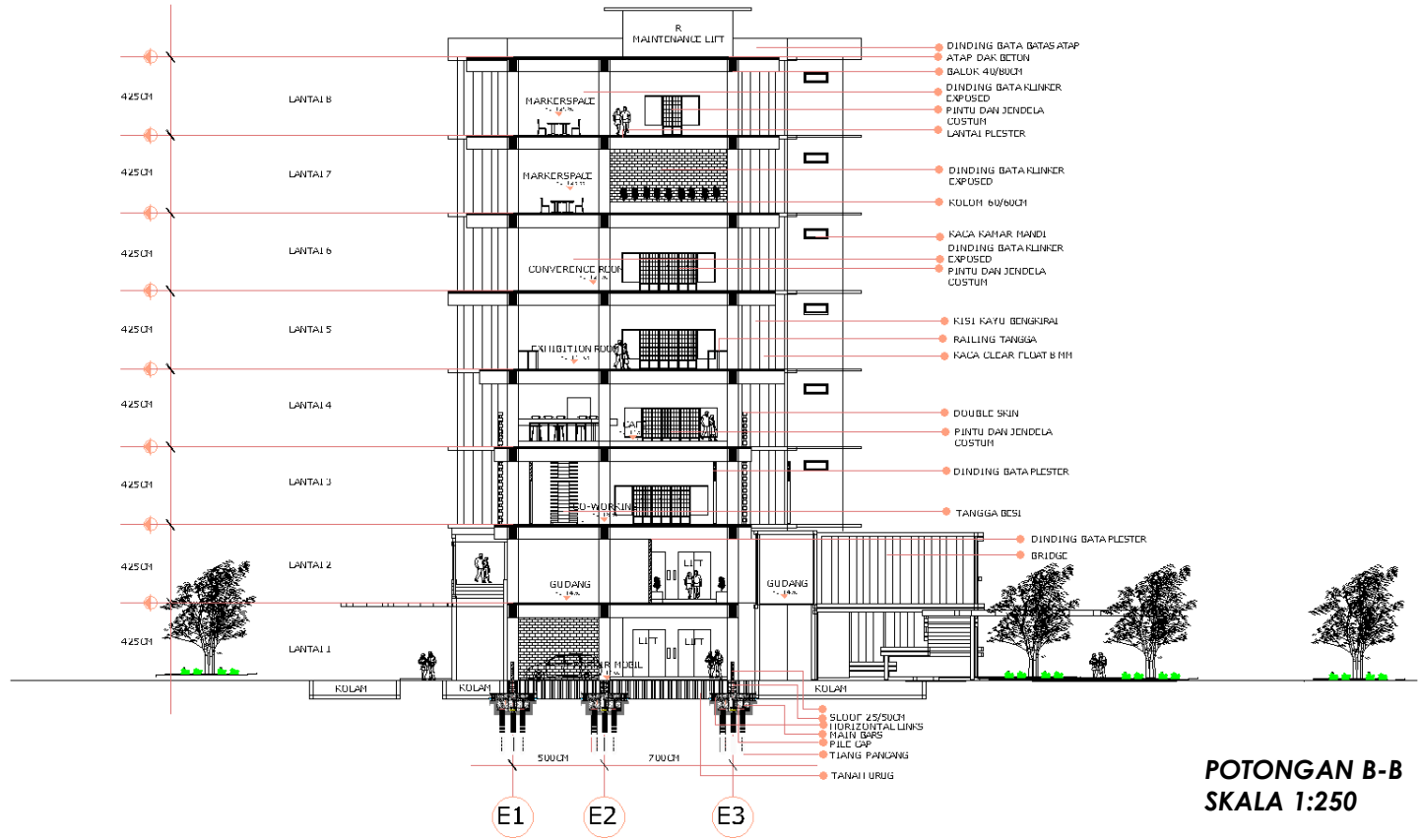
**DENAH LANTAI 7**  
**SKALA 1:250**



**DENAH LANTAI 8**  
**SKALA 1:250**



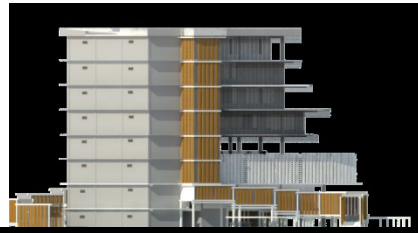




**POTONGAN B-B**  
**SKALA 1:250**



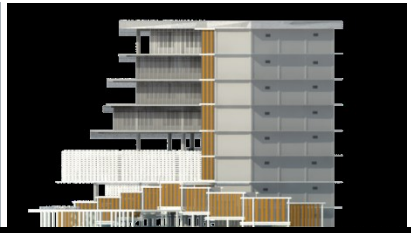
TAMPAK DEPAN



TAMPAK BELAKANG



TAMPAK SAMPING KIRI



TAMPAK SAMPING KANAN





PERSPEKTIF DI MALAM HARI





DETAIL EKSTERIOR





DETAIL EKSTERIOR

# SEMARANG CRATIVE HUB





DETAIL EKSTERIOR







Ruang Manager dan Administrasi



Exhibition Room



Café dan Resto



Lobby Area



Perpustakaan



Classroom



Co-Working Space



Conference Room A

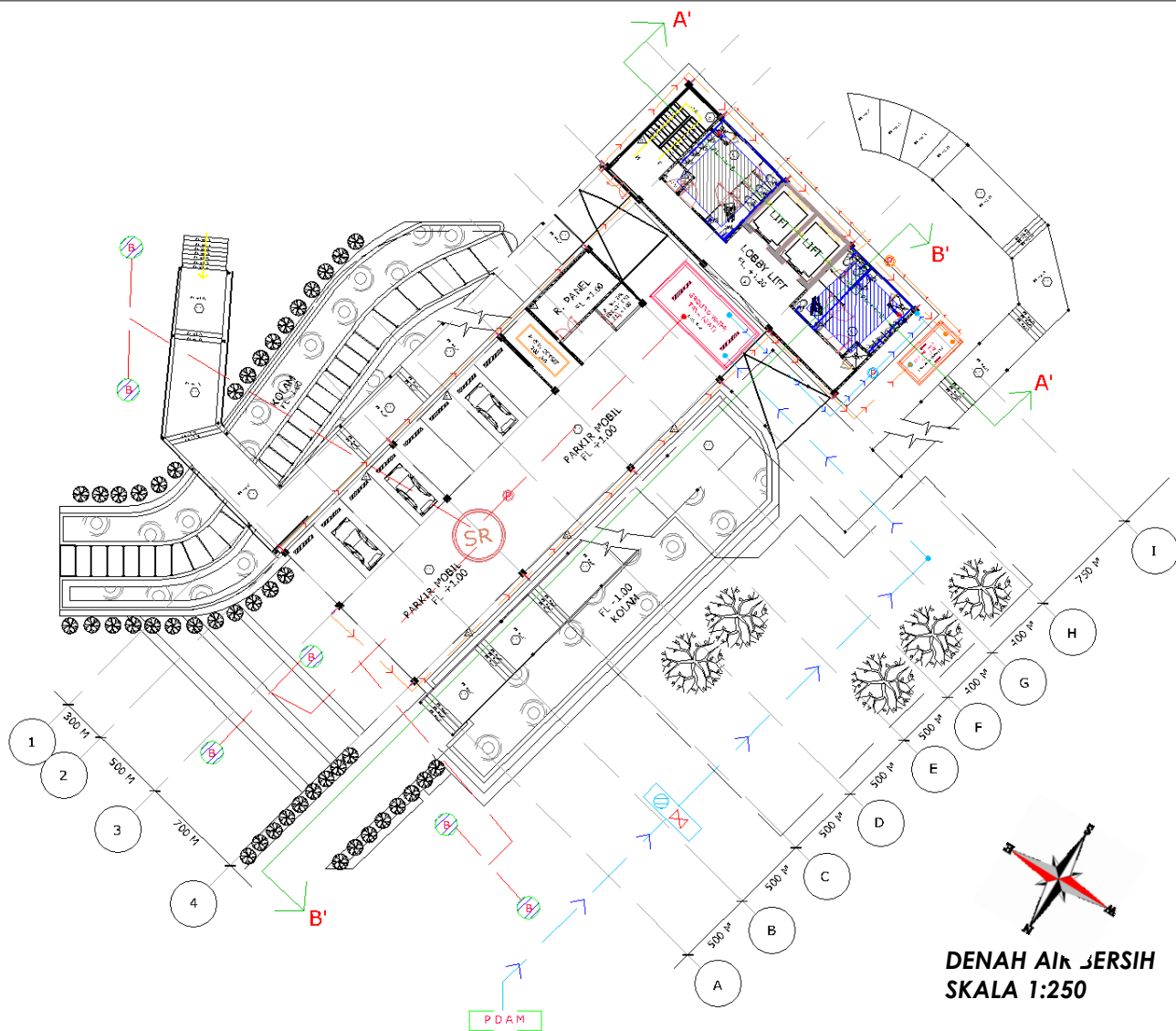


Design Store



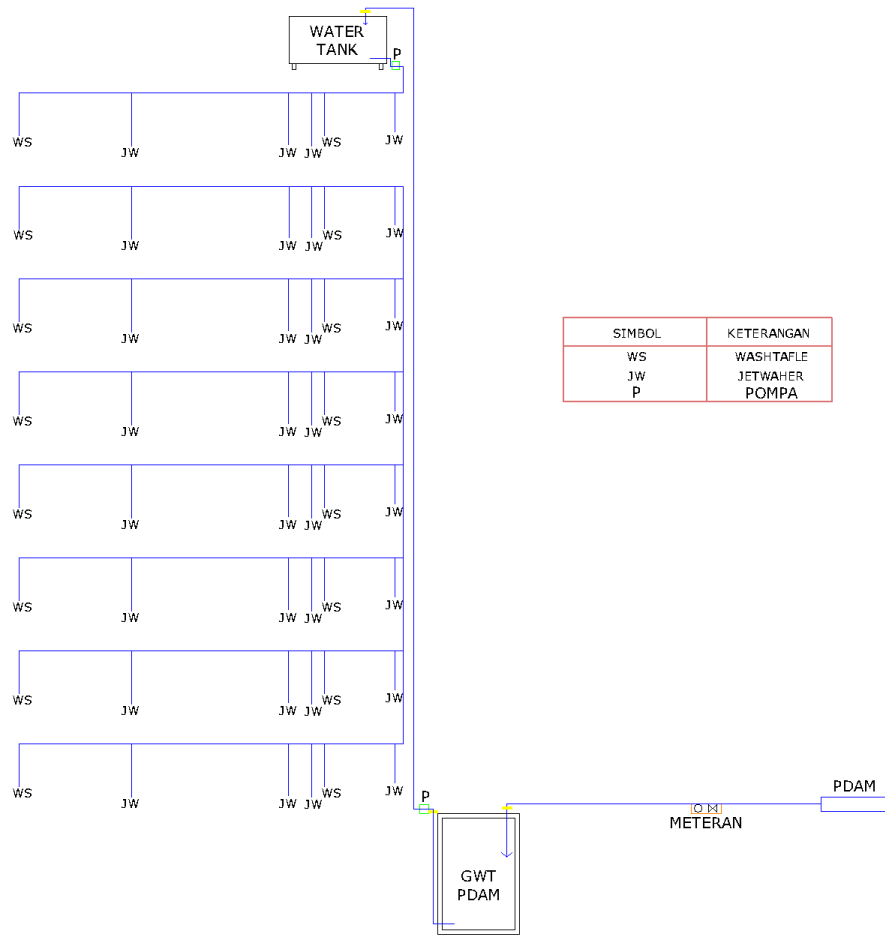
POTONGAN B\_B





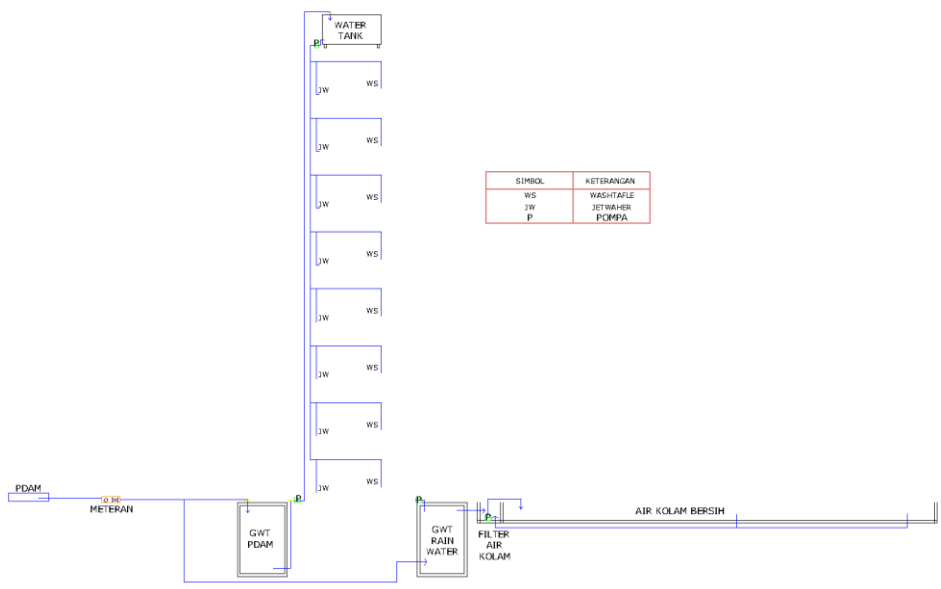
**DENAH AIR JERSIH**  
**SKALA 1:250**





SIMBOL	KETERANGAN
WS	WASH TAFLE
JW	JETWAHER
P	POMPA

**SKEMA SISTEM AIR BERSIH DARI PDAM**

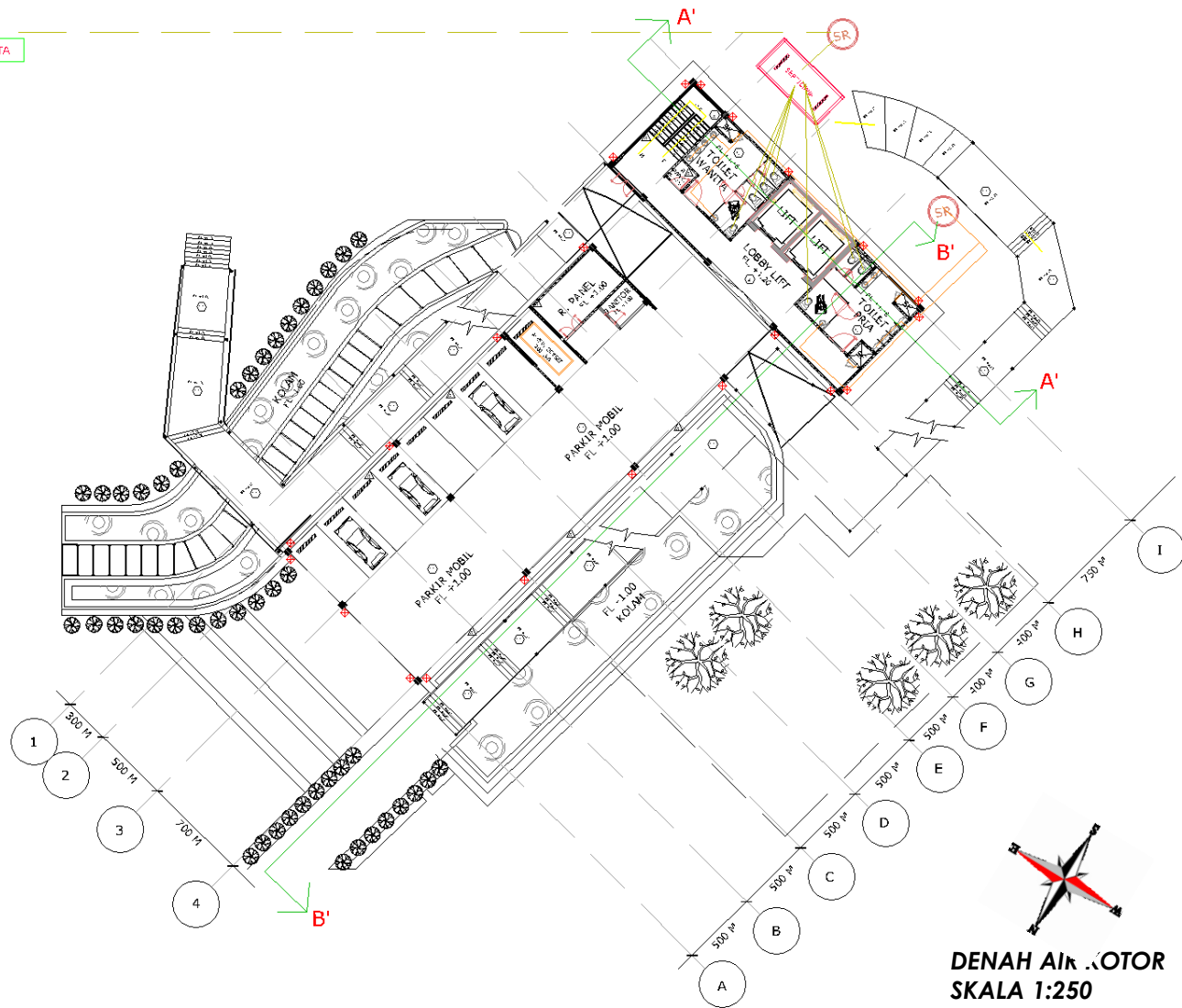


SIMBOL	KETERANGAN
WS	WASH TAFLE
JW	JETWAHER
P	POMPA

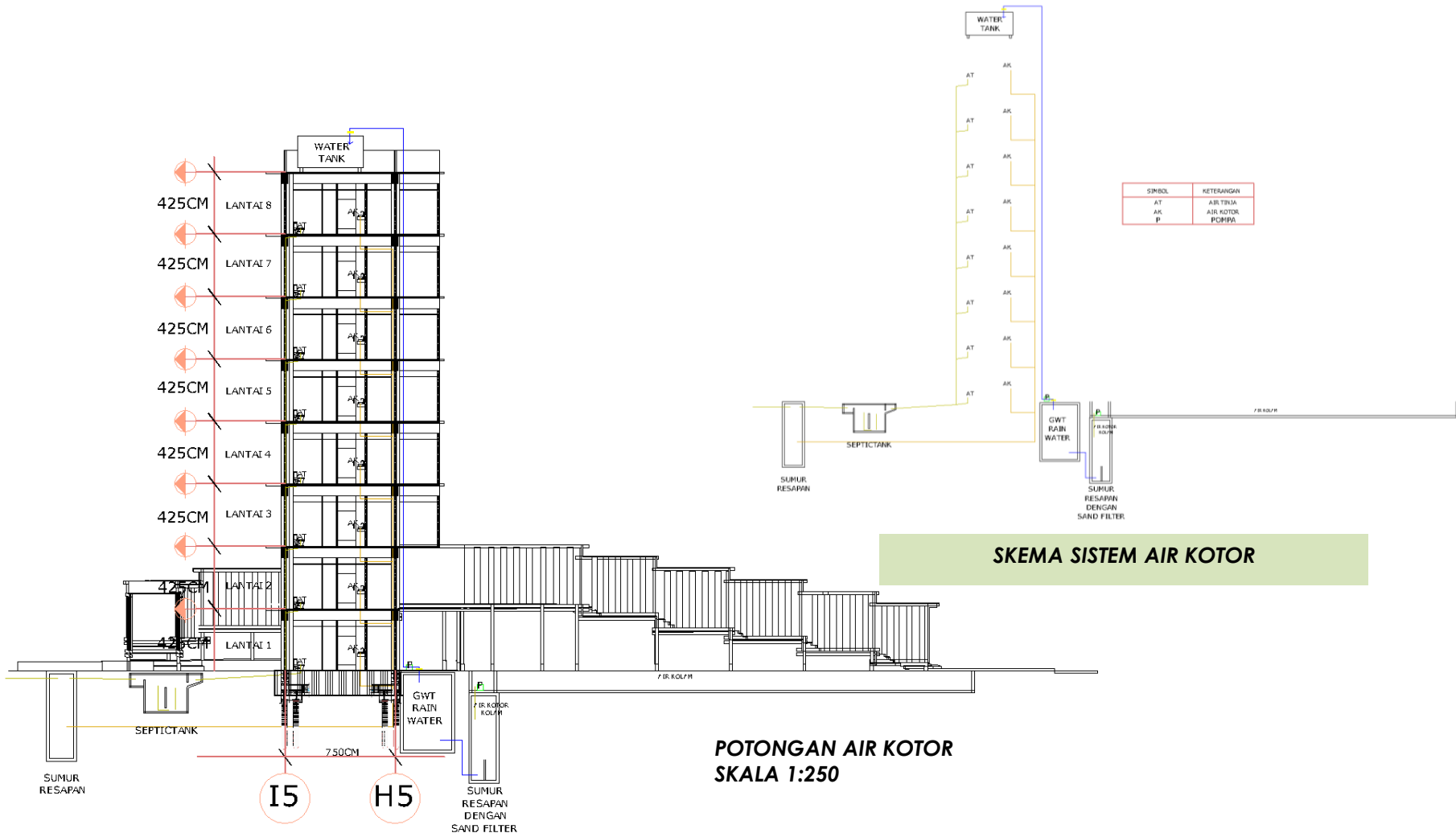
**SKEMA SISTEM AIR KOLAM**

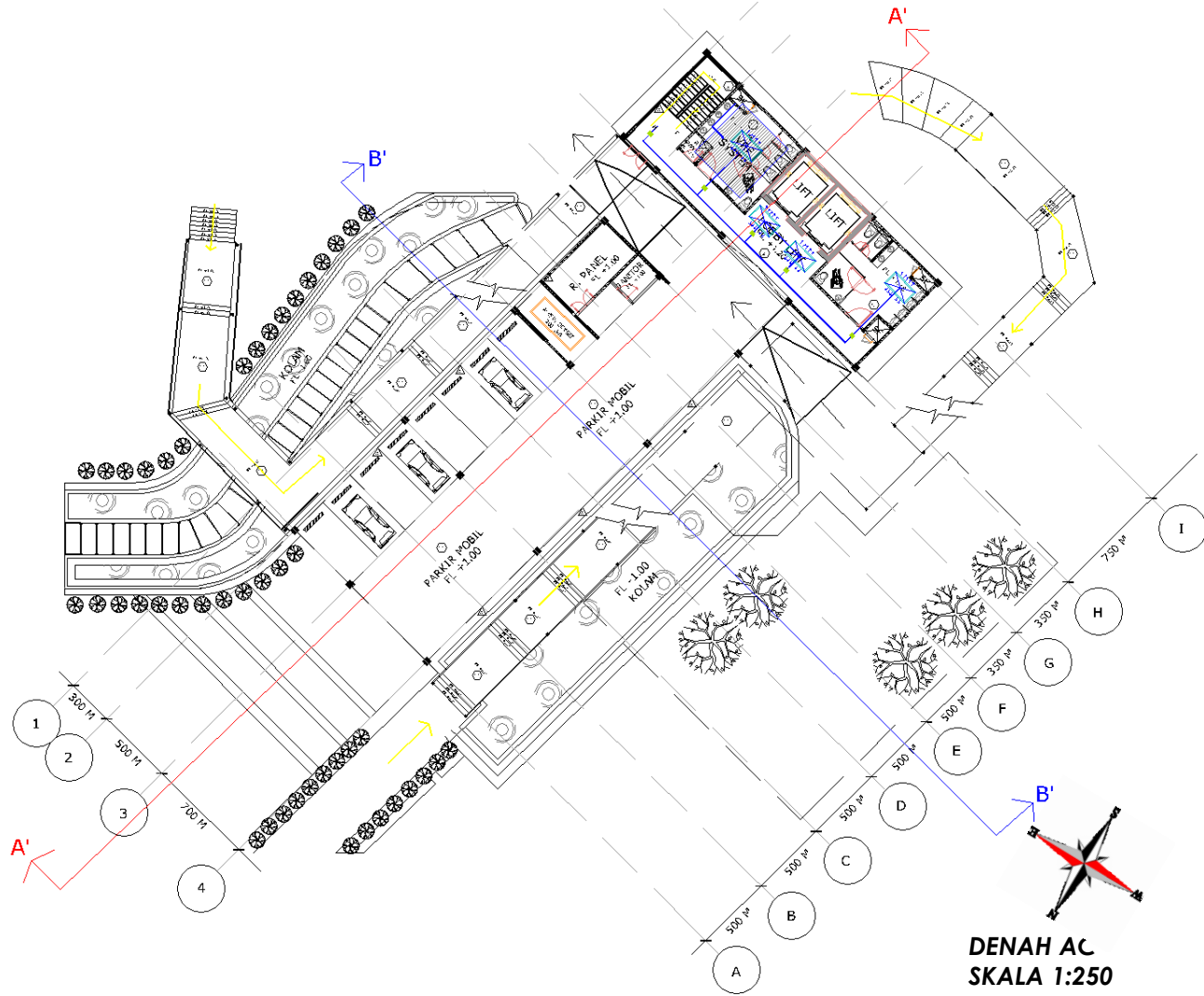


SALURAN KOTA

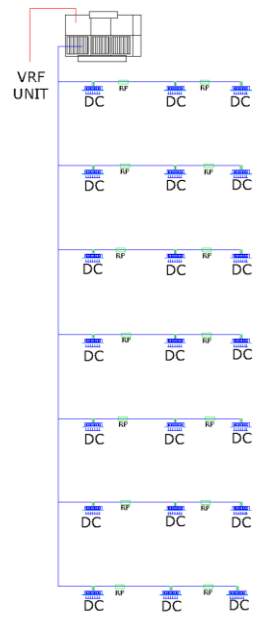


**DENAH AIR KOTOR**  
**SKALA 1:250**





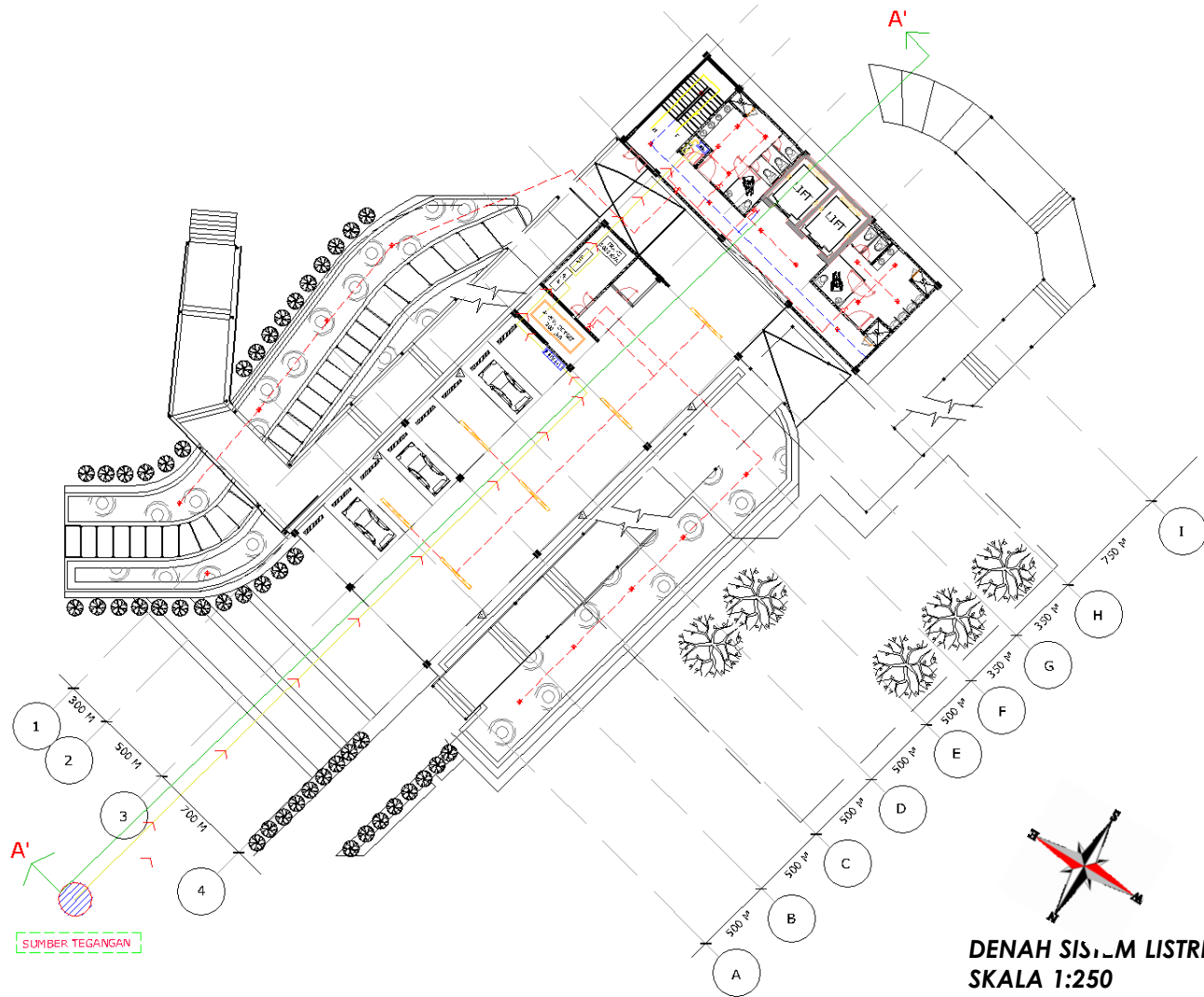
**DENAH AC**  
**SKALA 1:250**



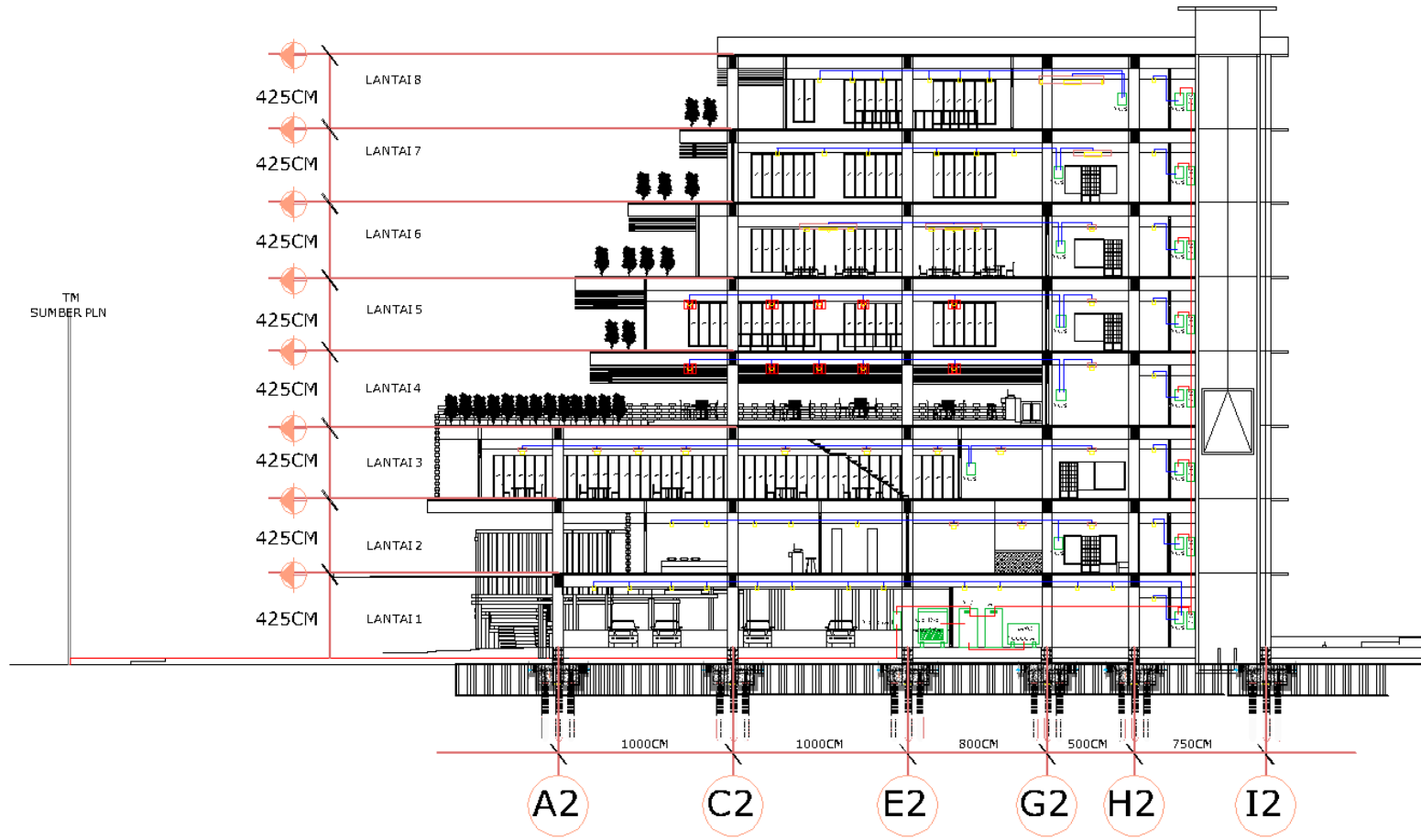
SIMBOL	KETERANGAN
DC	DUCTING
RP	REFRIGERANT PIPING

**SKEMA SISTEM AC**

**POTONGAN AC  
SKALA 1:250**



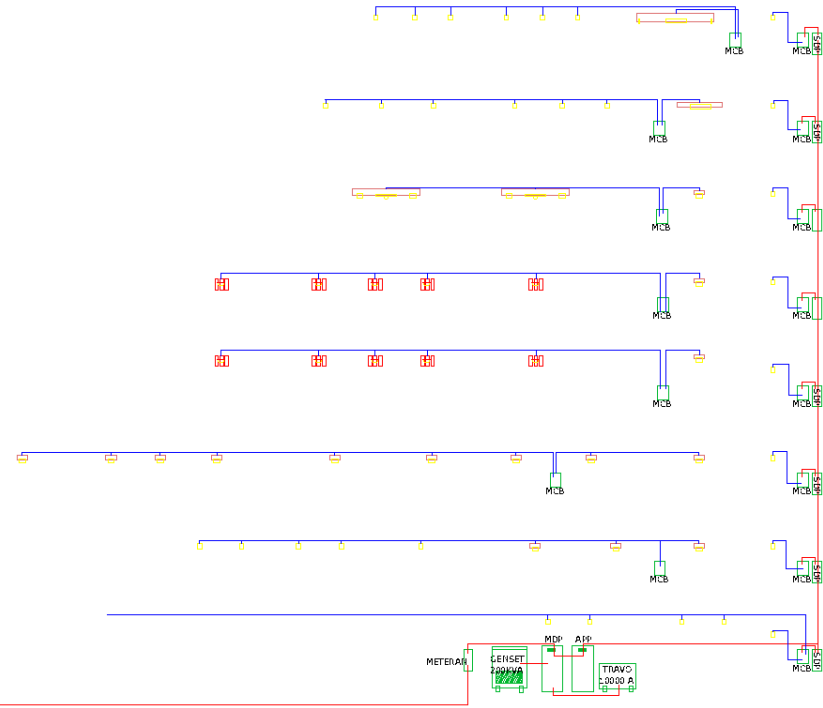
**DENAH SISTEM LISTRIK**  
**SKALA 1:250**



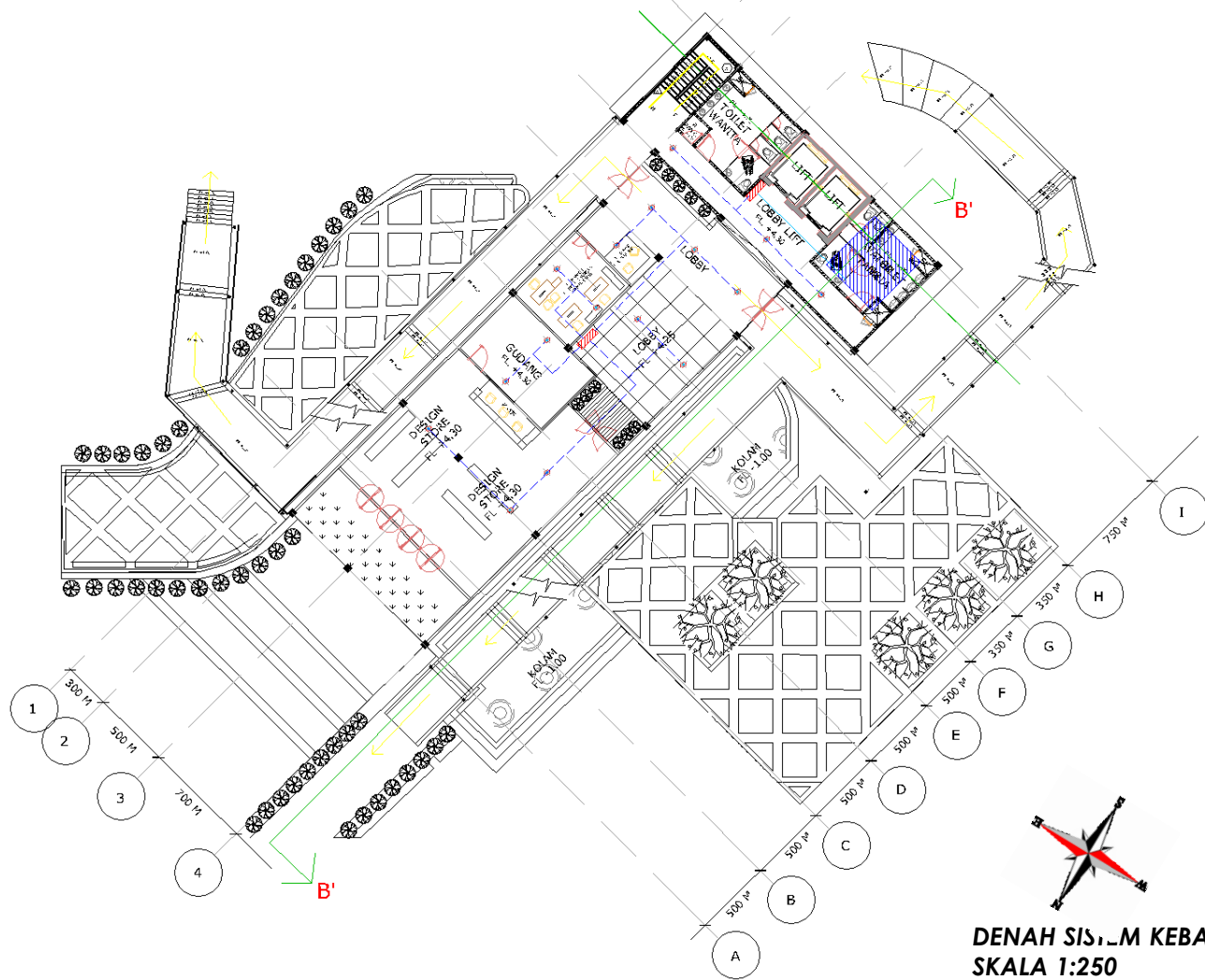
**POTONGAN SISTEM LISTRIK  
SKALA 1:250**



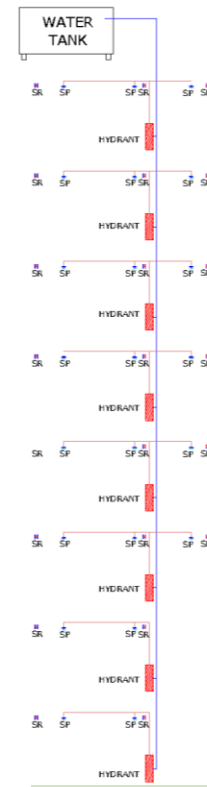
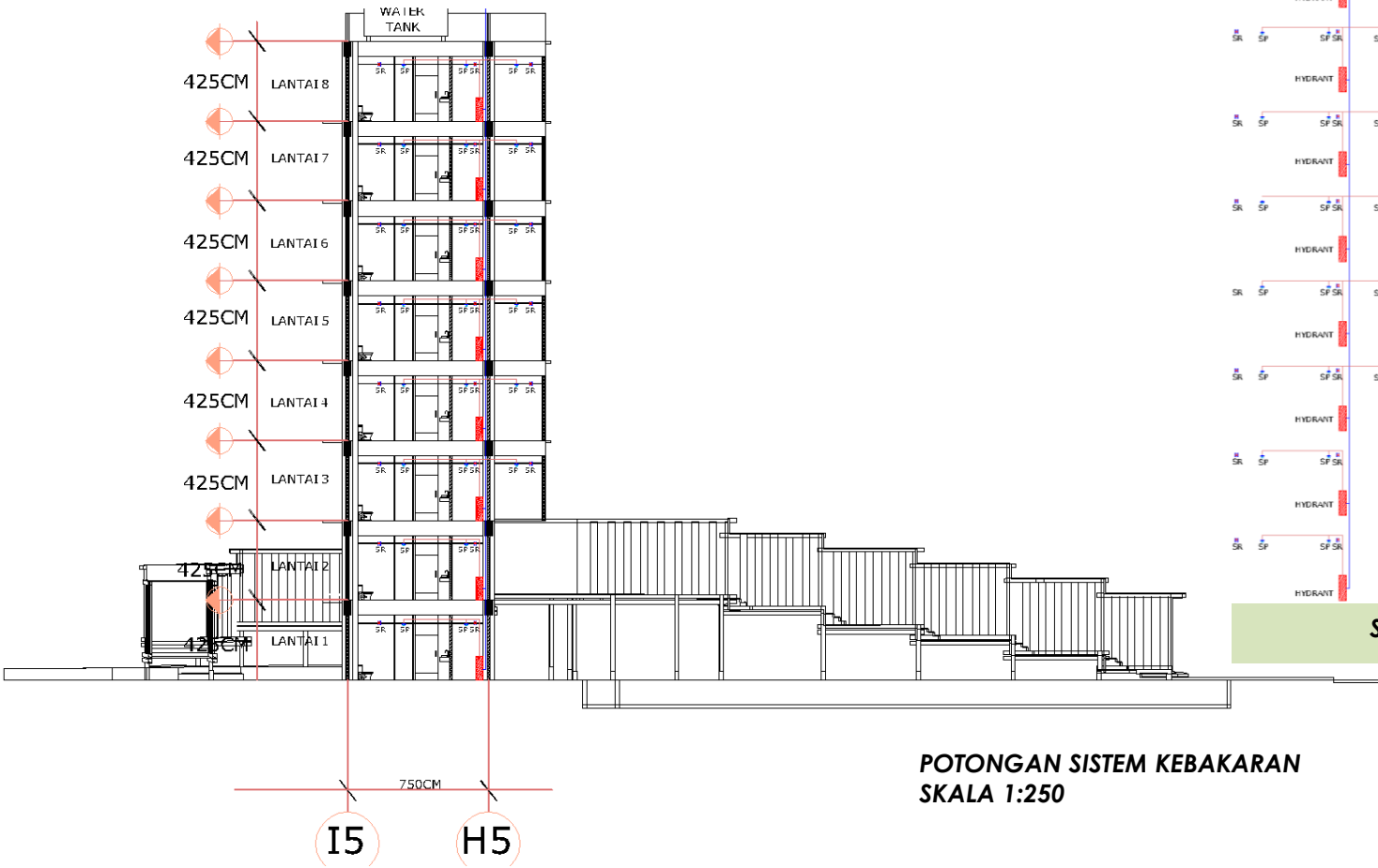
TM  
SUMBER PLN



**SKEMA SISTEM LISTRIK**



**DENAH SISTEM KEBAKARAN  
SKALA 1:250**



SIMBOL	KETERANGAN
SP	SPRINKEL
SR	SENSOR

**SKEMA SISTEM KEBAKARAN**

**POTONGAN SISTEM KEBAKARAN  
SKALA 1:250**

